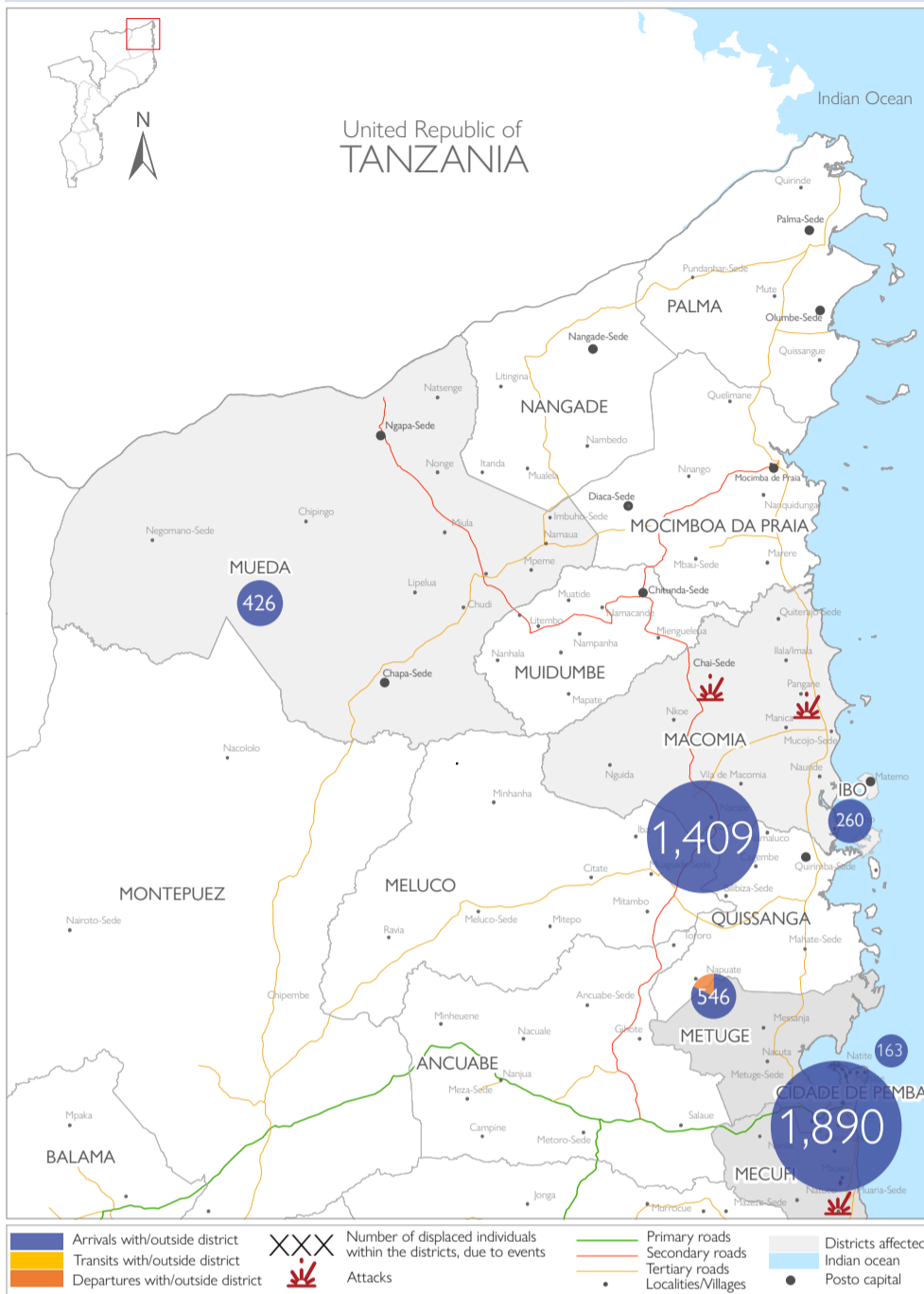


Ibo, Mecufi, Metuge, Macomia, Mueda and Pemba Districts, Cabo Delgado, Mozambique



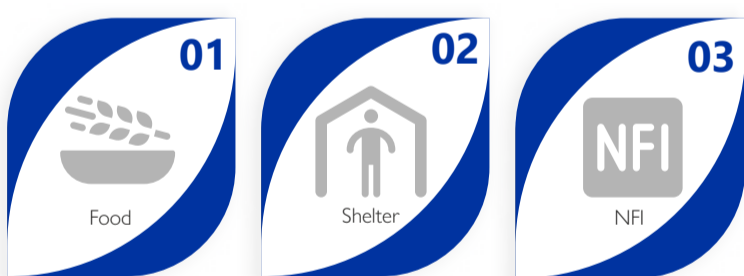
A second wave of attacks in northern Cabo Delgado (22 of January to 07 of February 2024) has triggered the displacement of 4,694 individuals (cumulating 10,037 from 26 of December 2023 to 07 of February 2024), affecting villages across Mocimboa da Praia, Muidumbe, Mecufi, and Macomia. DTM monitoring teams provide below cumulative figures as an update to previous Movement Alerts published (Movement Alert 92, 93 and Movement Alert 94). Of the total individuals displaced, 132 families with 426 individuals have taken refuge in displacement centers of Mueda (Imbuhu, Mpeme, and Centro Eduardo Mondlane), 308 families with 944 individuals have taken refuge in displacement centers of Macomia (Nanga A and Nanga B), and 45 families with 187 individuals have taken refuge in displacement centers of Metuge (Naminaue and Bandar).

During this reporting period, cumulative displacements have been mapped across 6 districts. Please consider below graphs for movement flows at Posto level. Further locational-level data is also available from DTM teams.

- In summary, Mecufi reports an estimate of 483 families with 1,890 individuals (inclusive of 1,217 children) who have been displaced from Natuco and Macomia (Napulubo), and are currently in Sambene, Natuco, Muituia and Maueia.
- In Macomia, 405 families with 1,409 individuals (inclusive of 794 children) have been displaced from Chai, Mucojo, Nkoe, Pangane, Mizeze and are currently located in Nanga A, Nanga B, Changane and Xinavane and Napulubo.
- In Mueda, 132 families with 426 Individual (inclusive 246 children) have been displaced from Mocimboa da Praia (Dica and Nango), are currently located in Mpeme, Imbuhu and Vila de Mueda.
- In Metuge, 131 families with 546 individuals (inclusive of 370 children) have been displaced from Chiure (Murocue) and Mecufi (Sambane), are currently located in Bairro 7 de Abril, Mazeze, Nacaca, Bandar and Naminaue.
- In Ibo, 72 families with 260 individuals (inclusive of 114 children) have been displaced from Macomia (Mucojo and Pangane), are currently located in Matemo, Quirimba and Vila do Ibo.
- In Cidade de Pemba, 38 families with 163 individuals (inclusive of 86 children) have been displaced from Ibo, Mecufi, Metuge and Macomia, are currently located in Paquite, Chuiba, Josina Machel and Maringanha.

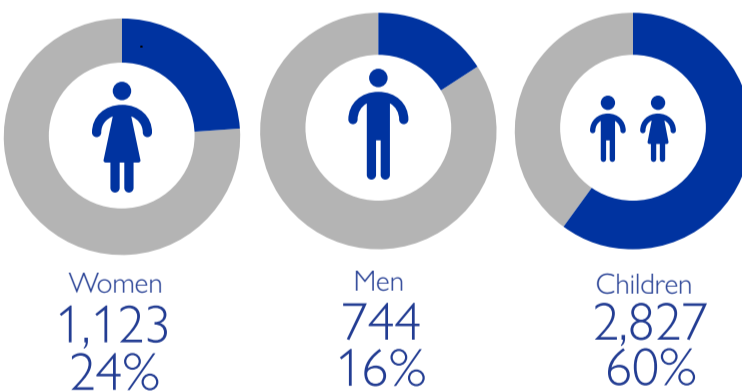
Owing to prevailing security concerns in the region reported by displaced families, intentions on duration of their stay in current locations of displacement sites and host communities remains uncertain. Movements in the region continue to be dynamic within the districts. The objective of the Emergency Tracking Tool (ETT) - Movement Alert is to collect information on large and sudden population movements, providing humanitarian response partners with data on IDPs to support effective humanitarian response. Information is collected through key informants' interviews or direct observation. This alert provides basic information on displacements, and additional information can be shared upon request.

URGENT NEEDS

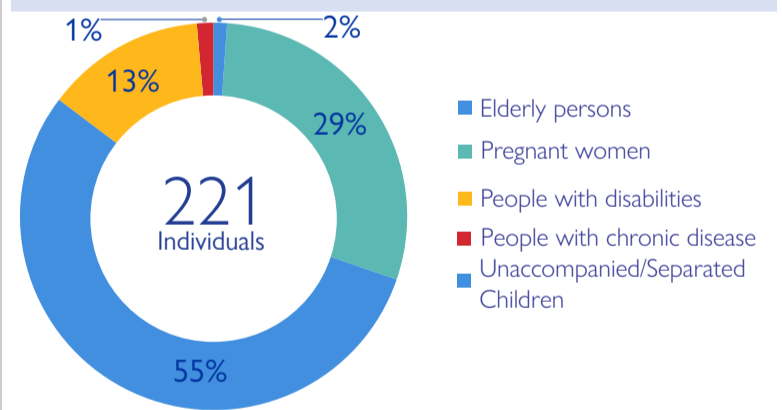


Urgent needs are calculated by weighting the total number of IDP arrivals in each group against the stated priority

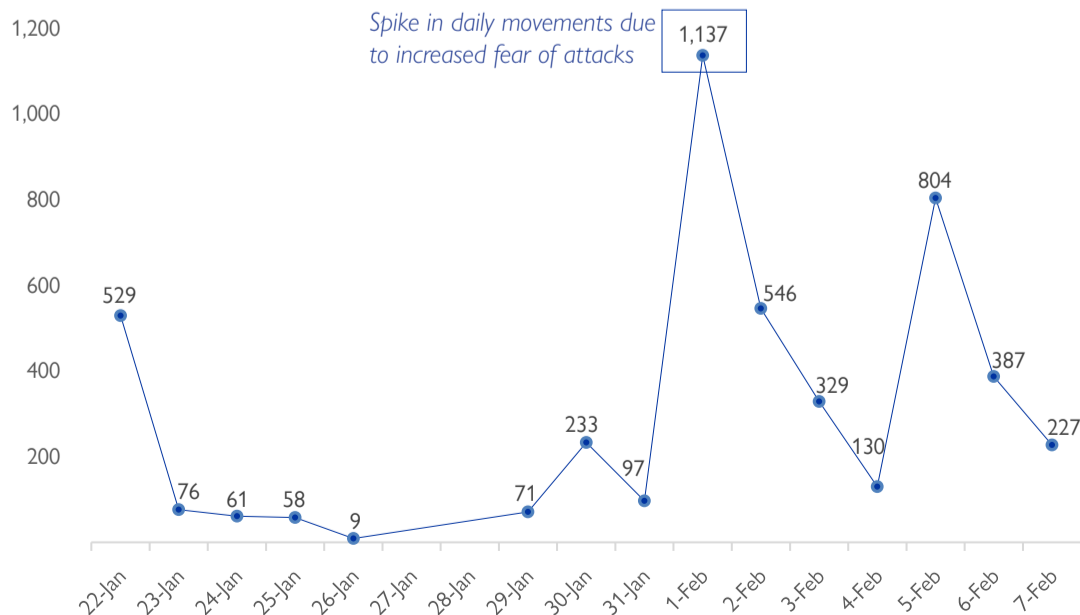
DEMOGRAPHIC PROFILE



VULNERABILITIES



TREND: DISPLACED INDIVIDUALS



MOVEMENT FLOW (DEPARTURE AT POSTO LEVEL)

